



Cable ID: LINHA LANDUTTI CATEGORIA 6 03

Test Limit: TIA Cat 6 Channel

Limits Version: V7.9

Date / Time: 10/22/2024 01:25:03 PM

Headroom 3.8 dB (NEXT 3,6-4,5)

Cable Type: Cat 6 U/UTP

NVP: 68.0%

Main: Versiv

S/N: 23380039

Software Version: V6.11 Build 2

Calibration Date: 05/16/2024

Adapter: DSX-602 (DSX-CHA004)

S/N: 23350225

Test Summary: PASS

Remote: Versiv

S/N: 23380044

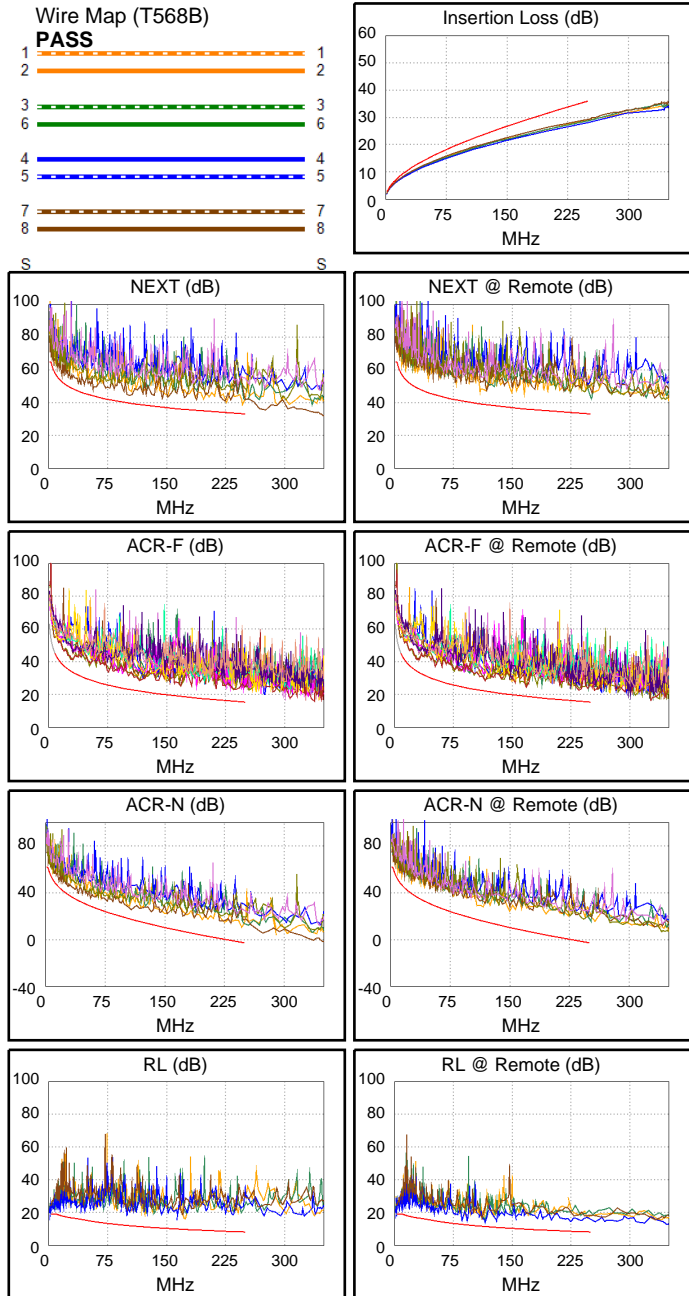
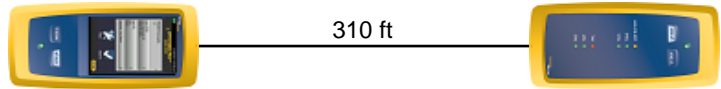
Software Version: V6.11 Build 2

Calibration Date: 05/16/2024

Adapter: DSX-602R (DSX-CHA004)

S/N: 23350224

Length (ft), Limit 328	[Pair 4,5]	310
Prop. Delay (ns), Limit 555	[Pair 7,8]	479
Delay Skew (ns), Limit 50	[Pair 7,8]	16
Resistance (ohms)	[Pair 7,8]	17.70
Insertion Loss Margin (dB)	[Pair 7,8]	6.2
Frequency (MHz)	[Pair 7,8]	250.0
Limit (dB)	[Pair 7,8]	35.9



Worst Case Margin Worst Case Value

PASS	MAIN	SR	MAIN	SR
Worst Pair	3,6-4,5	1,2-3,6	1,2-3,6	1,2-3,6
NEXT (dB)	3.8	6.0	5.5	9.3
Freq. (MHz)	17.0	14.1	247.0	165.5
Limit (dB)	52.8	54.1	33.2	36.2
Worst Pair	3,6	3,6	4,5	4,5
PS NEXT (dB)	5.5	7.6	6.8	13.1
Freq. (MHz)	107.5	14.0	250.0	250.0
Limit (dB)	36.5	51.6	30.2	30.2

PASS	MAIN	SR	MAIN	SR
Worst Pair	4,5-3,6	4,5-3,6	4,5-3,6	3,6-4,5
ACR-F (dB)	4.7	4.6	4.7	5.0
Freq. (MHz)	234.5	117.5	234.5	234.5
Limit (dB)	15.9	21.9	15.9	15.9
Worst Pair	3,6	4,5	3,6	4,5
PS ACR-F (dB)	7.4	7.0	7.8	7.0
Freq. (MHz)	234.5	248.0	248.0	248.0
Limit (dB)	12.9	12.4	12.4	12.4

N/A	MAIN	SR	MAIN	SR
Worst Pair	3,6-4,5	1,2-3,6	1,2-3,6	3,6-7,8
ACR-N (dB)	5.1	7.0	12.7	19.2
Freq. (MHz)	17.0	14.1	247.0	242.0
Limit (dB)	44.5	46.6	-2.5	-1.9
Worst Pair	3,6	3,6	1,2	3,6
PS ACR-N (dB)	6.1	8.2	14.5	21.2
Freq. (MHz)	3.3	3.1	250.0	250.0
Limit (dB)	58.4	58.4	-5.8	-5.8

PASS	MAIN	SR	MAIN	SR
Worst Pair	4,5	4,5	1,2	4,5
RL (dB)	2.8	2.2	6.1	2.2
Freq. (MHz)	3.9	116.0	173.0	116.0
Limit (dB)	19.0	11.4	9.6	11.4

Compliant Network Standards:

10BASE-T	100BASE-TX	100BASE-T4
100BASE-T	2.5GBASE-T	5GBASE-T
ATM-25	ATM-51	ATM-155
100VG-AnyLan	TR-4	TR-16 Active
TR-16 Passive		